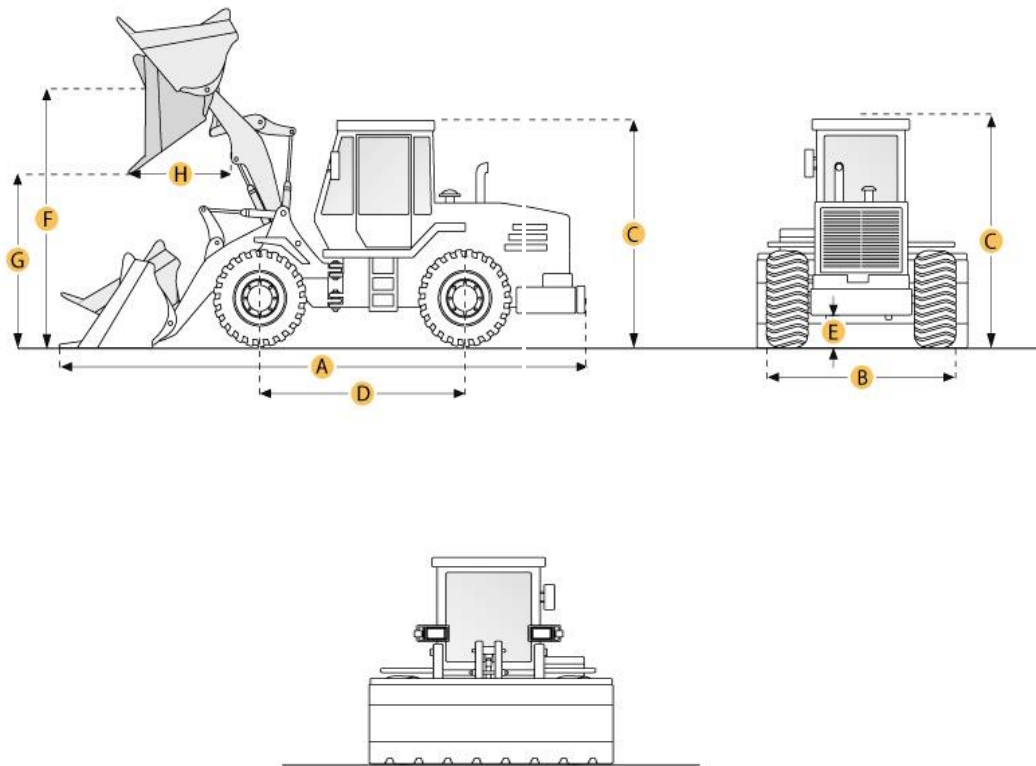


# Komatsu WA100-3 Wheel Loader



## Selected Dimensions

### Bucket

G. Dump Clearance at Max Raise 9.1 ft in 2770 mm

### Dimensions

A. Length with Bucket on Ground 18.8 ft in 5745 mm

B. Width Over Tires 7.1 ft in 2150 mm

C. Height to Top of Cab 9.4 ft in 2875 mm

D. Wheelbase 7.8 ft in 2400 mm

E. Ground Clearance 1.3 ft in 420 mm

F. Hinge Pin - Max Height 11.7 ft in 3565 mm

## Specification

### Engine

Make	Komatsu	
Model	S4D102-5	
Net Power	82 hp	62 kw
Power Measured @	2350 rpm	
Displacement	201 cu in	3.3 L
Number of Cylinders	4	
Aspiration	Turbo charged	

### Operational

Operating Weight	15057 lb	6830 kg
Fuel Capacity	29.1 gal	110 L
Hydraulic System Fluid Capacity	13.2 gal	50 L
Engine Oil Fluid Capacity	2.5 gal	9.5 L
Cooling System Fluid Capacity	3.4 gal	13 L
Front Axle/Diff Fluid Capacity	2.8 gal	10.6 L
Rear Axle/Diff Fluid Capacity	2.8 gal	10.6 L
Static Tipping Weight	12389 lb	5620 kg
Turning Radius	15.3 ft in	4685 mm

### Transmission

Type	Hydrostatic	
Number of Forward Gears	2	
Number of Reverse Gears	2	
Max Speed - Forward	18.6 mph	30 km/h
Max Speed - Reverse	18.6 mph	30 km/h

### Hydraulic System

Pump Type	Open hydraulic system	
Relief Valve Pressure	3481 psi	0 kPa
Pump Flow Capacity	19.8 gal/min	75 L/min
Raise Time	5.1 sec	
Dump Time	1.6 sec	
Lower Time	4.5 sec	

**Bucket**

Breakout Force	14550 lb	6600 kN
Dump Clearance at Max Raise	9.1 ft in	2770 mm
Bucket Width	7.3 ft in	2200 mm
Bucket Capacity - heaped	1.6 yd <sup>3</sup>	1.2 m <sup>3</sup>

**Dimensions**

Length with Bucket on Ground	18.8 ft in	5745 mm
Width Over Tires	7.1 ft in	2150 mm
Height to Top of Cab	9.4 ft in	2875 mm
Ground Clearance	1.3 ft in	420 mm
Wheelbase	7.8 ft in	2400 mm
Hinge Pin - Max Height	11.7 ft in	3565 mm

**New & Used Heavy Equipment**